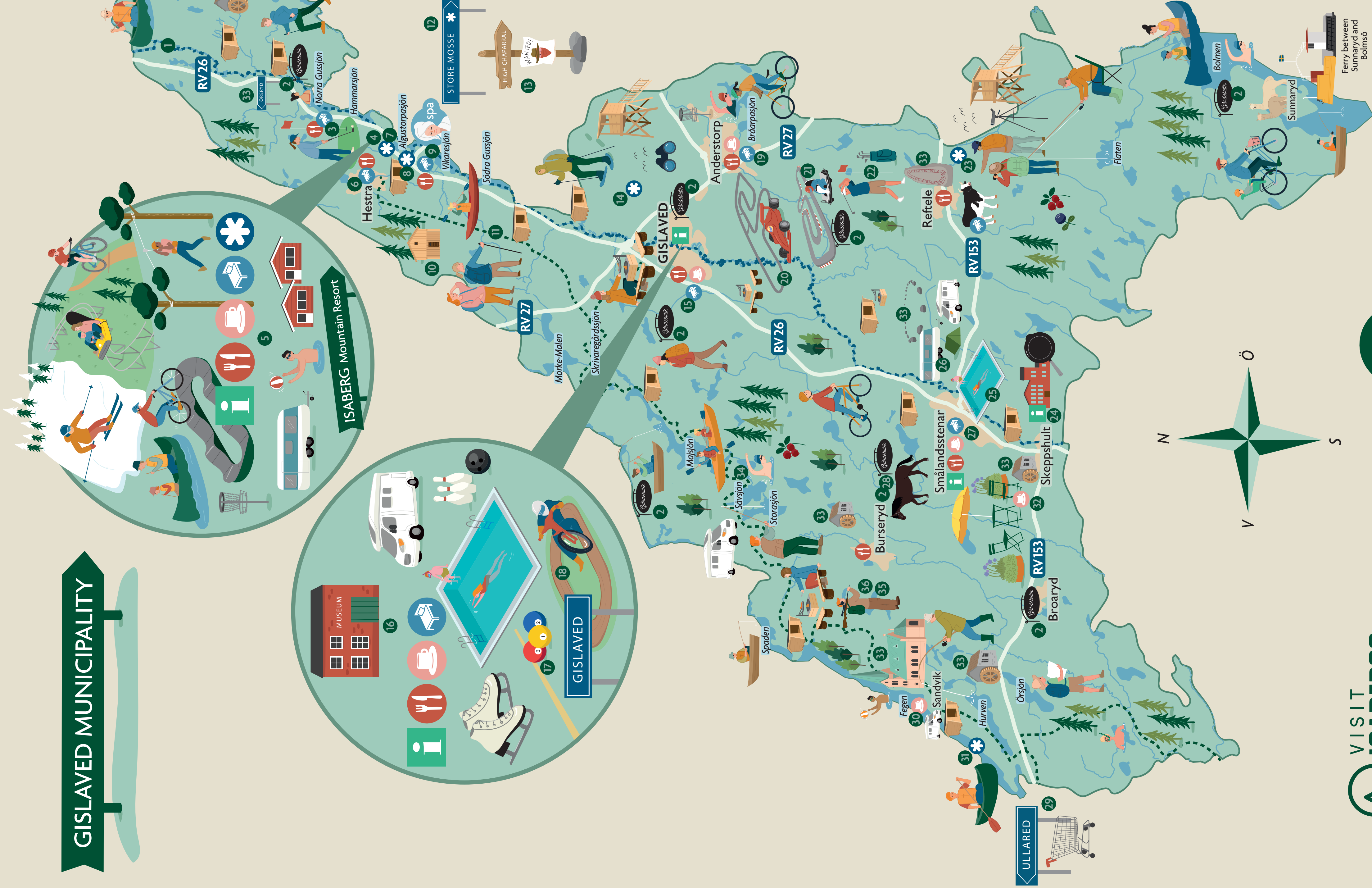


THE ADVENTURE STARTS HERE!

GISLAVED MUNICIPALITY



KEY

Accommodation

- 4 Isaberg Mountain Resort
 - 6 Hestra Guesthouse
 - 9 Hestraviken Hotel Spa Restaurant
 - 10 Bonabo Norrgård (cottage)
 - 15 Hotel Nissastigen
 - 19 Hotel Åsen
 - 26 Hørsjöns camping
 - 27 Smålandsstenar Hotel
- ### Restaurants & Cafés
- 3 Isaberg Golf Club
 - 5 Isaberg Höganloft-restaurant
 - 9 Hestraviken Hotel Spa Restaurant
 - 15 Hotel Nissastigen
 - 30 Sommarcafé Sandvik
 - 32 Kärrhults Farm

Nature experiences

- 1 Nissan canoe trail
- 7 Etto Nature Reserve
- 8 Varo Nature Reserve
- 11 Gislavedsleden walking trail
- 14 Anderstorp Stormosse Nature Reserve
- 23 Draven Nature Reserve
- 31 Fegen Nature Reserve

Activities & Experiences

- 2 Farm shops
- 3 Isaberg Golf Club
- 4 Isaberg Mountain Resort
- 9 Hestraviken Hotel Spa Restaurant
- 12 Store Mosse
- 13 High Chaparral
- 16 Gislaveds Industrial Museum
- 17 MeetUp
- 18 Speedway track (OnePartnerGroup Arena)
- 20 Scandinavian Raceway
- 21 Scandinavian Kartway (karting)
- 22 Reftele Golf Club
- 24 Skeppshults Foundry/outlet
- 25 Hørsjöbädder swimming pool
- 28 Slåhult Farm shop - Horse and carriage
- 29 Gekås, Ullared (Department store)
- 33 Cultural history experiences



TRAVEL IN TIME!
Experience exciting history via one of our history tours.

MAP KEY

- Infopoint
- Nature Reserve
- Hostel / hotel
- Restaurant
- Café
- Gislavedsleden walking trail
- Nissan canoe trail



EVEN MORE ADVENTURES?
Scan the code!



20 experiences you don't want to miss

- Experience the adventure at Isaberg with thrilling rides on the alpine coaster, high-speed MTB trails, and playful high ropes courses among the treetops. **4**
- Step into the Wild West at High Chaparral, with gold panning, train robberies, and exciting shows. **15**
- Cruise across Lake Bolmen, Sweden's 10th largest lake, on the ferry between Sunnaryd and Bolmsö. **9**
- Enjoy a nature-inspired spa experience and total relaxation at Hestraviken Riverside Spa. **9**
- Join Slåthultsboden on a scenic horse and carriage ride through the Småland forests and cultural landscapes. **28**
- Visit the scenic Sandvik at Lake Fegen's shore and enjoy a coffee break at Sockenstugans summer café. **30**
- Step into the shoes of a world-famous Formula 1 driver at Scandinavian Kartway. **21**
- Birdwatch from the tower and search for trolls in Store Mosse National Park. **12**
- Enjoy fika in Kärrhult Farm's blooming visitor garden - a hectare of greenery with home-made treats and locally produced flavors. **32**
- Experience roaring engines and pure action at Scandinavian Raceway in Anderstorp - Sweden's only former Formula 1 track, now hosting exciting events. **20**
- Climb the 500 steps of Jättetrappan - Sweden's longest outdoor staircase - and be rewarded with sweeping views from Isaberg's summit and its iconic tower. **4**
- Don't miss Fabriksrundan in October - a unique shopping event where around 50 factories open their doors for great deals on quality and design products. **24**
- Hike the Skyttvärnsleden trail near the Öretyd refugee camp and discover the unique history of escape and secret military training during World War II. **35**
- Discover Skeppshult Foundry - a living craft since 1906, where you can find handcrafted cast iron products in the well-stocked outlet shop. **24**
- Explore the Småland countryside and its farm shops - filled with locally produced delicacies. **2**
- Take a day trip to Gekås in Ullared - Sweden's largest department store, famous for its huge selection and unbeatable prices. **25**
- Treat yourself to a sauna and a swim in scenic surroundings at Isaberg - rent your own floating sauna on Lake Algustorpasjön and finish with a barbecue by the campfire. **4**
- Experience the tranquility of Nöjders Ro - a unique off-grid cabin at Bönabo Norrgård, with its own forest pond, hot tub, and barbecue area in the heart of the Småland forest. **10**
- Enjoy a magical paddling trip to Värö - a nature reserve with high ecological value, where you can stay overnight in a wind shelter on your own island. **8**
- Experience the Småland mountains with Isaberg's 11 ski slopes of varying difficulty, ski school, cozy cabins, and après-ski. **4**



Småland's biggest outdoor experience

Welcome to southern Sweden's largest bike park
At Isaberg there are more than 25 marked mountain bike trails that offer many beautiful miles both on and around the mountain. For those who prefer going downhill, there is a network of trails that wind down the mountain. The 6-chair lift takes you and the bike all the way up to the top of the mountain.

Scandinavia's largest pump track
For those who want to develop their technique or just have some fun, there is also a 6 hectare technical area. A paradise for anyone who loves speed and tricky challenges on two wheels. It features XCO trails, a freestyle park, and an awesome 2600 square metre pump track of world class, with lots of opportunities for both young and old mountain bikers.



High Chaparral - experience the Wild West

At High Chaparral, exciting adventures await you in a genuine Wild West environment, where you yourself are part of the adventure. Experience action-packed shows, meet villains like the Dalton brothers and train robbers, pan for gold, climb aboard a paddle steamer, meet Zorro and his friends or go at full gallop on a hobbyhorse.

TIRED OF BEING OUTSIDE?
Scan the code!



- Fun activities**
- Bowl
 - Padel tennis
 - Cinema
 - Shuffleboard.

Well-known products from the Isaberg region

- Hestra Gloves
- Kockums Cast Iron Pot
- Skeppshult Bicycle
- Skeppshult Frying Pan
- The Lilla Åland Chair
- Staplers



Winter in the Isaberg region

Southern Sweden's largest ski resort
Isaberg is southern Sweden's largest ski resort and a classic winter sports resort with a centuries-old history. Isaberg offers 11 pistes in all levels of difficulty, from nice green to breathtaking black, and 8 lifts, including a 6-chair lift that takes you to the top. At the mountain there is a holiday village, restaurants, ski hire and sports shop as well as a ski school. Everything you need for a successful ski holiday.



Magnificent nature experiences and untouched wilderness

Closeness to nature is our strength and in the Isaberg region there are 388 lakes, fabulous forests and moorland. You can enjoy our fantastic nature on foot, by bike, canoe or with a fishing rod in your hand. Cook over an open fire and fall asleep under the stars in one of our shelters.

Nature reserves and nature areas

Anderstorp Stormosse Nature Reserve
Bird watching towers, wind shelter, barbecue area, cycle path, snowshoe hiking (hire at Hestra Guesthouse).

Fegen Nature Reserve
Hiking trail, canoeing, wind shelter, barbecue areas, fishing.

Värö Nature Reserve
Wind shelter, barbecue area, walking paths, fishing (accessible by canoe).

Etjö Nature Reserve
Swimming area, barbecue area, hiking trails.

Holmen
Barbecue cabins, playground, walking paths, fishing.

Draven Nature Reserve
Bird watching towers, wind shelters, barbecue areas, hiking trail.

Store Mosse National Park
Hiking trails, bird watching towers, Nature Centre, guided tours, snowshoe walking.

Bolmen
Bathing area, marina, fishing, canoeing and cycling trails.



Places to eat in the Isaberg region

Farm Shops and Culinary Experiences

A Taste of Småland
In Småland, food is as authentic as the landscape itself. Farm shops offering organic products blend with local sourdough bakeries and cafés, where you can enjoy homemade bread and traditional Swedish fika. Experience classic Småland delicacies such as raggmunk (Swedish potato pancakes) and ostkaka (Swedish cheesecake), or try innovative dishes inspired by nature. In Småland, food is all about quality, tradition, and a deep love for the local produce.

Discover Our Farm Shops and Rural Life

Experience the Småland countryside at its very best. Visit our charming farms and rural cafés, where you can meet the animals - from fluffy lambs and cows to lively pigs, hens, and horses. Learn about the small but meaningful details of farm life, such as grooming a horse or collecting fresh eggs straight from the henhouse.

Shop for locally produced delicacies like ostkaka, sausages, apple must, and fresh milk in glass bottles - all straight from the farms.



Wander...

Gislavedsleden
Via Gislavedsleden, which is about 100 km long, you get to experience the landscape of Småland up close: fabulous forests, small forest lakes, red cottages with white trim and cow pastures. The trail stretches from Isaberg in the north to Lake Fegen in the south and goes through two nature reserves and a number of fascinating cultural areas.

If you want to live a wilderness life and sleep out in the open, there are seven campsites with wind shelters and fireplaces along the trail. For those who prefer to spend the night under a roof, there are many personal and genuine accommodation options.

More hiking trails

- Fornminnesleden
- Tuskeboleden
- Knavraboledden
- Nissan Nature and Culture Trail
- Hiking trails around Isaberg



A place of enjoyment and recreation

Stay in the countryside and close to the lakes
In our part of Småland there are many places to stay that give you the opportunity to experience the Småland dream for real. Wake up to fabulous woodland, lingonberries and flower meadows all around you. Experience the feeling of drinking your morning coffee overlooking a small forest lake or having only a few metres to go for an evening swim.

Riverside Spa

At Hestraviken's Riverside Spa, guests can relax in the nature-inspired Spa complex, which enjoys a unique location by the Nissan River. Enjoy three heated outdoor pools and a sauna area that hangs out over the Nissan. Rather more cooling bathing is offered in the river from a jetty. In the various treatment rooms you can book treatments for body and soul.



Canoeing - experience nature from the water surface

Nissan canoe trail
The canoe trail goes through four nature reserves and shows the most beautiful side of Småland. In the northern part of the trail, the Nissan river runs through forest lakes. Here you can experience what it feels like to step ashore on a deserted island and explore the magical nature. The southern part of the canoe trail has a more winding course and is in many places very meandering. Here the trees hang like an arch over the river and if you are lucky you will see a deer or a moose standing and drinking at the edge of the river. You can start and end wherever you want along the canoe trail. Have a lovely day trip or set off on a longer adventure by paddling the entire trail of almost 90 kilometres.

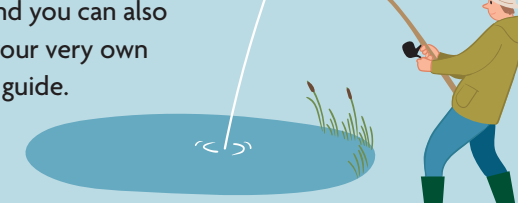
Good canoeing lakes

- Majsjön
- Bolmen
- Fegen
- Algustorpasjön



Fish in one of our 388 lakes

The Isaberg region offers fantastic fishing opportunities all year round for both sport and recreational anglers. Popular fishing waters include Fegen, Bolmen, Nissan lakes, Majsjön and the Nissan river. Several operators offer lakeside accommodation with a boat and you can also book your very own fishing guide.



The wonderful camping life

In our part of Småland you can enjoy the wonderful camping life at Isaberg Mountain Resort or Hörsjöns camping. Both campsites are close to wonderful nature and a lot of fun activities.



VISIT ISABERGS REGIONEN

Experiences map

Gislaved Municipality

